



Gerald R. Ford Amphitheater

530 S Frontage Rd E

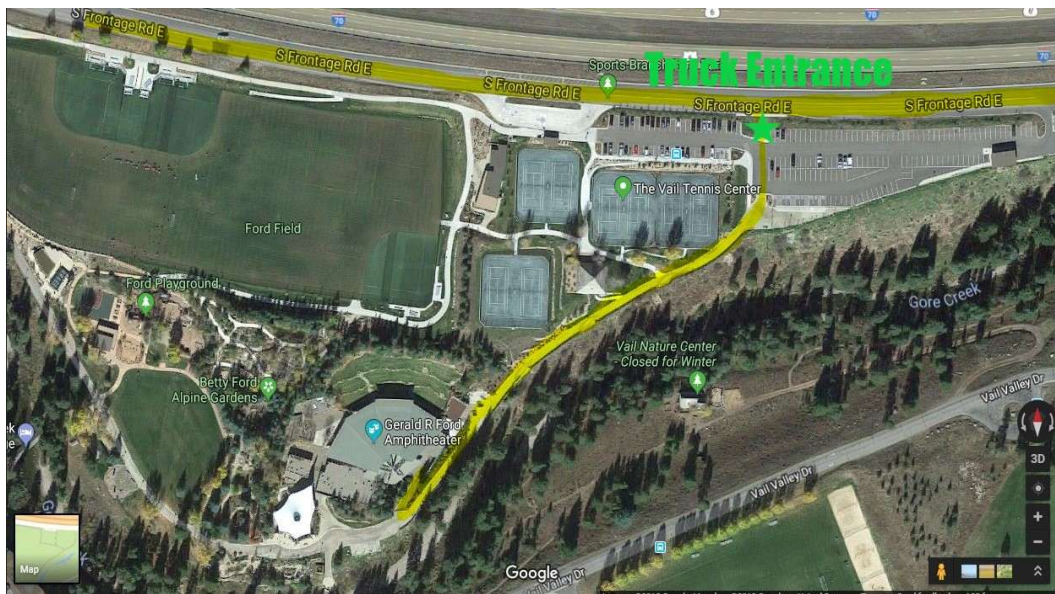
Vail, CO 81657

www.grfavail.com

1265 Pavilion seats (covered) - 1300 Lawn capacity (open air)

Contacts

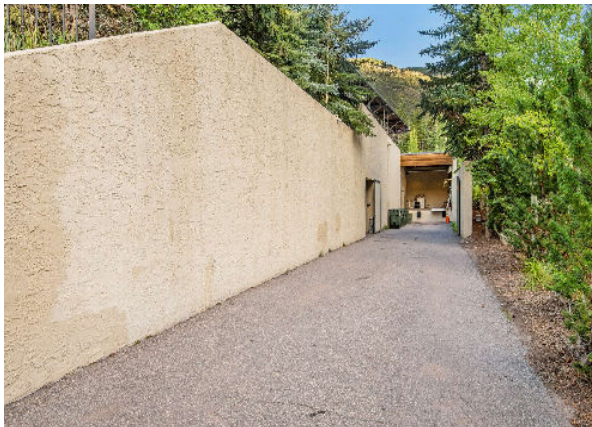
Tech Director	Cheyenne Mendoza	cmendoza@vfv.org	(719) 839-0226
Production Manager	Patrick Zimmerman	patrickzimmerman@comcast.net	(970) 471-1275
Production Manager	Shane Huebner	shuebner@vfv.org	(203) 414-9065
Operations/Merch	Peter Blosten	pblosten@vfv.org	(303) 241-7602
Ticketing	Lauren Gary	lgary@vfv.org	(970) 748-6651



On-site loading dock parking – ALL PARKING MUST BE ADVANCED with Production

Accommodations ONLY for:

- (1) Tour bus with trailer or (1) 53' Semi Tractor-Trailer; or (4) personal vehicles
- The venue is in the middle of a pedestrian park. As a result, there is no parking available directly outside our facility along the park walkways.
- Vehicle access is limited to drop-offs and deliveries only.
- The venue general parking lot, located 3 min walk to the Amphitheater
- **Oversized vehicle parking MUST be organized in advance with venue**



Dock Driveway- Single Bay



Short Push to Stage

Loading dock – ALL PARKING MUST BE ADVANCED with Production

- Truck Height- Direct to stage right with dock plate. 50 Amp Shore power available.
- Due to the proximity to stage and seating, gas or diesel generators are not permitted.
- 72" dock plate and ramp are available

Vehicles must be escorted through into park via a pedestrian path. Do not enter without an escort!

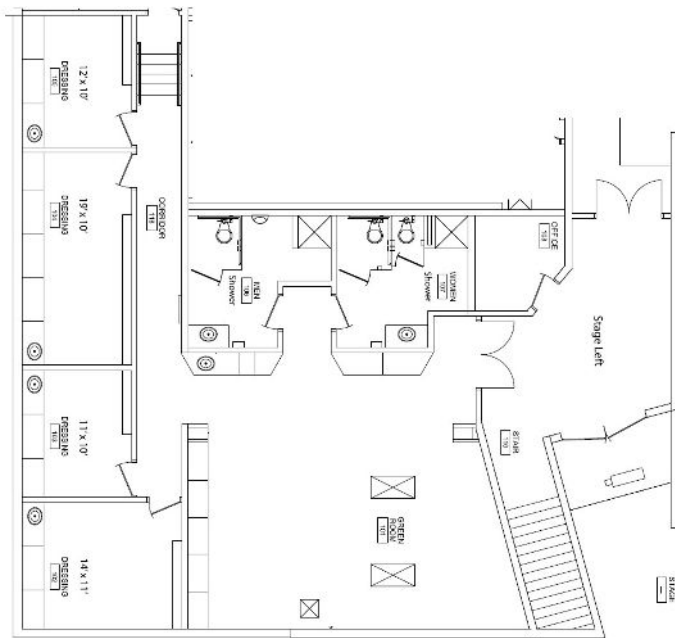
Artist Space

Green Room located Stage Left with adjoining M/W restrooms/showers (2); kitchenette facilities

- Dressing Room #1: 14' x 11' located Stage Left
- Dressing Room #2: 11' x 10' located Stage Left
- Dressing Room #3: 19' x 10' located Stage Left
- Dressing Room #4: 12' x 10' located Stage Left
- Rehearsal/Catering: 20' x 40' located in basement

Minimal shared Laundry available by request

Wifi available throughout venue - Password posted onsite.



Dressing Room 1 of 4



Green Room

Power

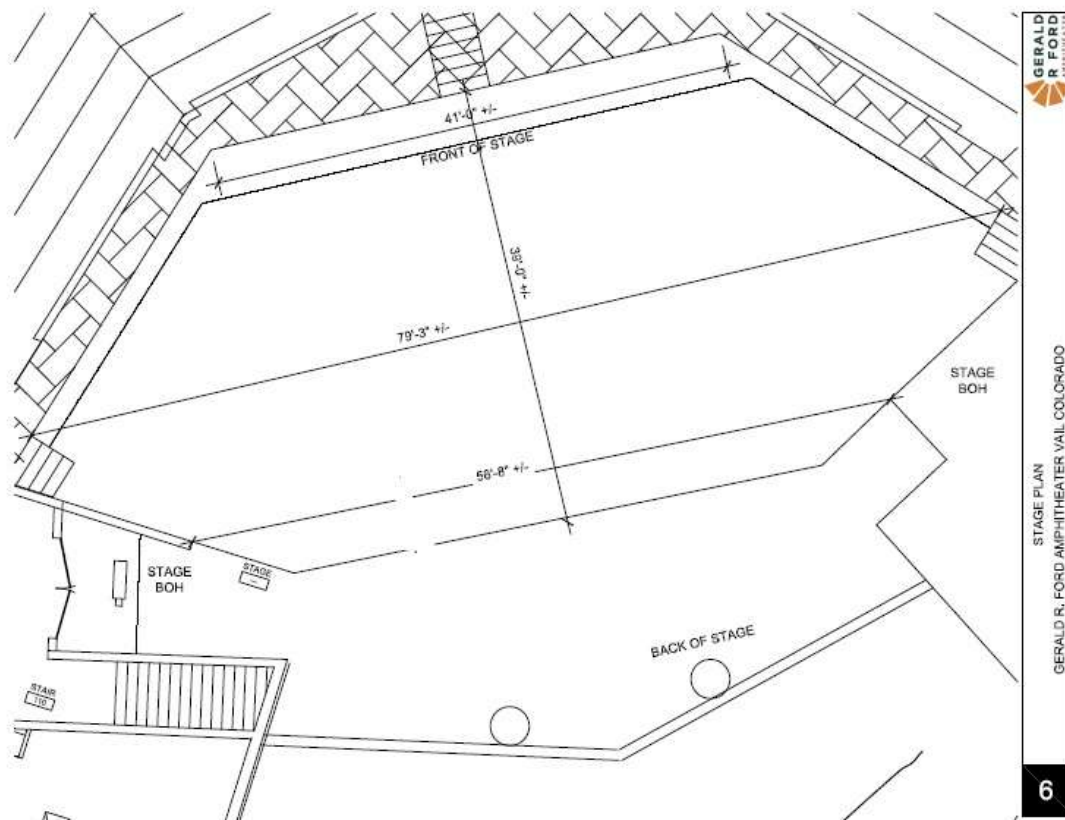
All building power is 120v A/C

All stage services are equipped with 3 phase Cam-Lok Connections

- (1) 400A 3 ϕ Lighting Service SR
- (2) 200A 3 ϕ Audio Services SR (House Motor distro lives on one service)
- (1) 200A 3 ϕ Audio Service SL
- 100 amp 110v isolated, clean power (Edison plugs) located at house mix position

Stage

- The stage is fully protected from the rain and is covered with a flat-black, slip-resistant wooden surface. (4) 4'x8' risers with 16" or 8" legs, removeable center stage stairs are available
- Stage is 4' height at downstage edge



Stage is not Rectangle, please reference drawing

Sound

PA System *(view next page for system screenshots)*

- L'Acoustics K3 (16 boxes, 8 per side)
- L'Acoustics Kara II (4 boxes, 2 per side, down-fill for K3)
- L'Acoustics KS28 (8 boxes, Center Flown, Aux fed)
- L'Acoustics X8 (8 boxes, front fill, Aux Fed)
- L'Acoustics A15i (4 boxes, out-fill, L/R Sum)
- L'Acoustics A15i (12 boxes, Lawn delays, L/R Sum)
- L'Acoustics P1 – System Processor located at FoH.
- All amplification provided by LA12X & LA4X amplified controllers.
- Covered mix position located slight left of center rear house.

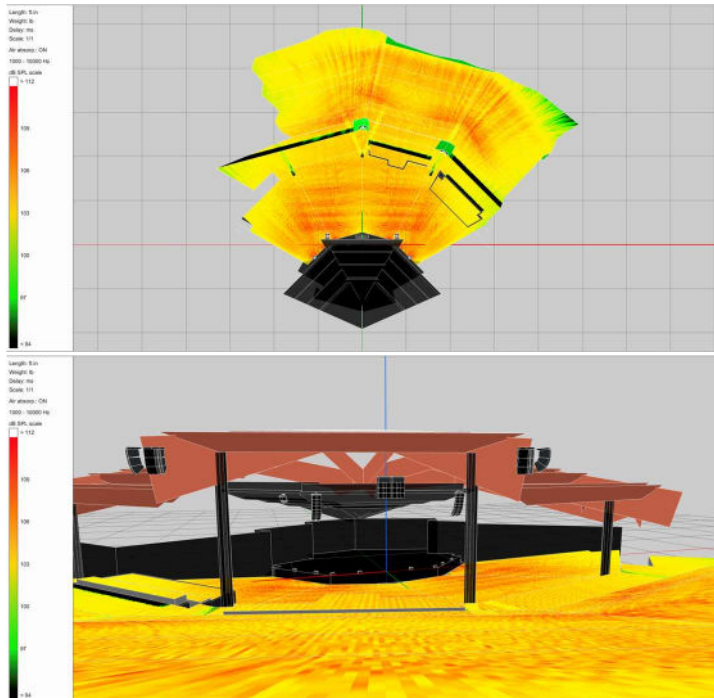
SPL Limit – measured at the fixed front of house mix position

- House SPL limit of 98dB LAeq 30 (Measured @ FoH)
 - Levels are monitored by a 10Eazy Class 1 SPL microphone located at FoH.
- Violation charge: \$2,500 (for every 3 times (consecutive or non-consecutive) that the stated limit is exceeded during an event.) Audience noise is not subject to violations.

Com

- Clear-Com Free speak wireless intercom system

Soundvision Screenshots



Video

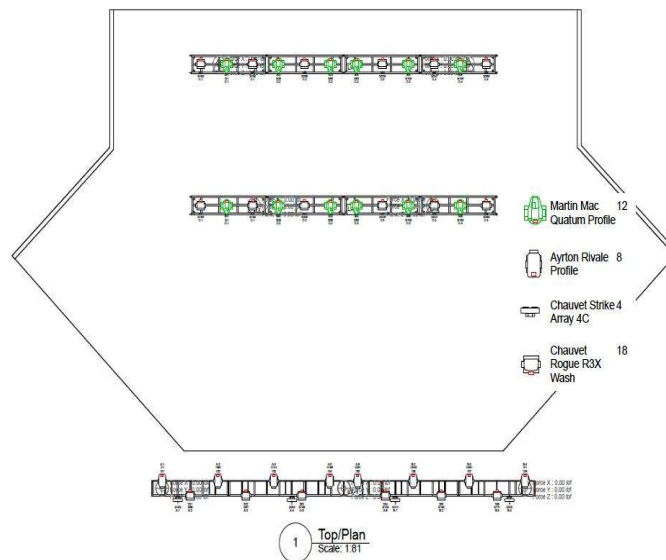
In-house IMAG system with an 18'x10' LED wall- hung at back of pavilion viewable from lawn seating.

- ROE 5.95mm pitch LED video wall
- Sony RM IP-500 Controller
- (3) Sony BRC H800 PTZ Cameras
- (3) JVC GY-HM620 Cameras
- (2) Marshall CV503 Cameras
- Blackmagic Design Television Studio Switcher

Lighting

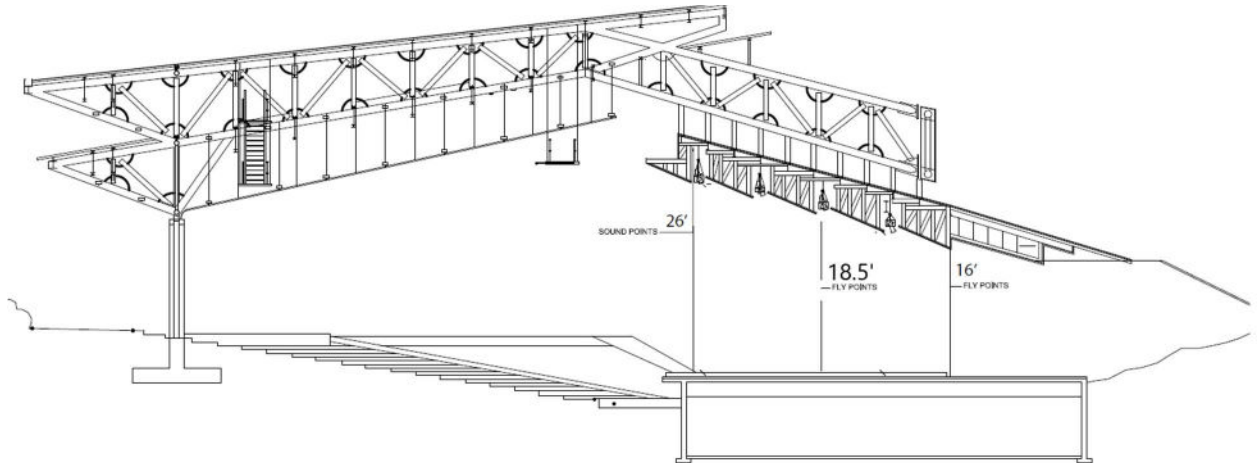
Flown House Lighting Package

- DS-50', (8) Ayrton Rivale, (6) Chauvet R3X, (4) Chavet Array 4C Color Blinders
- MS-40', (6) Martin Mac Quantum Profile, (6) Chauvet R3X
- US-40', (6) Martin Mac Quantum Profile, (6) Chauvet R3X
- Chauvet NET-X II Node
- House lighting trusses can be removed for tour lighting, if requested
- DS Lighting Rigging Points require 50' Truss
- Does not include Control or any Ground Package



Main and out-fill PA points

- (2) Upstage points rated at 1000lbs each, 32' apart with 16' trim height
- (2) Midstage points rated at 1000lbs each, 22' apart with 18.5' trim height
- (3) downstage points rated at one metric ton each. 6' out from the downstage edge. One is at center, and one at 26' to Stage Right and one to stage left. Total span is 52'

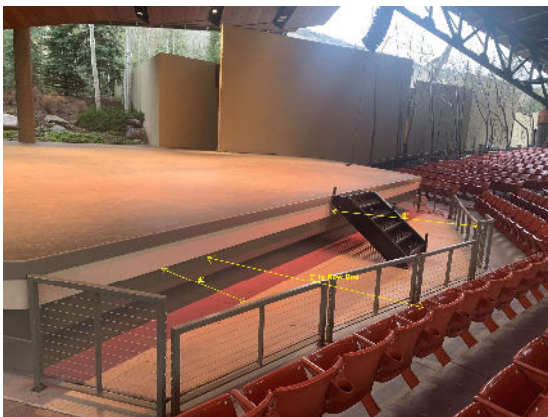


Forklift

- **No forklift access, please advance any stacking/unstacking needs**

Barricade

- Low barricade/flower planter center stage; bike barricade available – advance notice required for side stage.



Curfew

- Hard 11PM, no exceptions

Special FX

- Confetti, streamers, flame, and pyro are never permitted.



Smoking

Smoking is not permitted anywhere inside the amphitheater including the stage, the restrooms, and the artist dressing rooms. Smoke detectors in these areas will disable all sound power and summon the fire department. Unfortunately, we do not have ashtrays available, so please plan accordingly.

Catering and liquor license

- Gore Creek Concessions is contracted with the Gerald R. Ford Amphitheater as the exclusive food and beverage provider for all events occurring within the amphitheater.
- As a result, no food or beverage is permitted into the facility with the exception of food and non-alcoholic, commercially sealed beverages for your individual, personal consumption.
- All catering requirements (food brought in for the benefit of a group) must be coordinated through Gore Creek Concessions

The Ford Amphitheater is a liquor-licensed premise. No alcoholic beverages may be brought into nor taken from the facility by any individual or group under any circumstances. All alcoholic beverage requirements for your event must be handled by Gore Creek Concessions exclusively. This includes backstage catering. Colorado State Law prohibits any deviation from this policy.

Please understand that this is informative only, and is not meant to alter, amend, or otherwise change any Ford Amphitheater lease agreement.

Merchandising – Venue advance contact- pblosten@vvf.org

- All merchandising to be sold at the Amphitheater must be advanced through the Amphitheater and is subject to a fee of 20% of gross sales, or previously contracted rate
- Sales Tax is 9.4%
- Artist sells; venue can connect to local sellers
- Shipping Information:
 - Gerald R Ford Amphitheater c/o Peter Blosten
 - 530 S Frontage Rd E
 - Vail, CO 81657
- Please advance with venue prior to any shipments, storage is limited.
- Merch sales footprint, 10'x20' covered space with (2) eight foot tables and (2) six foot tables; lighting, Wi-Fi access and grid to display merchandise available.

Box office

- Admittance to or use of the box office space is not permitted without prior approval from the Facility Staff

Signs and advertising

- No public display of signage, sponsorship material, advertisements, posters, or banners is permitted without prior approval of the Facility Manager



General information about the Vail Valley Foundation

The Vail Valley Foundation is a 501c3 Colorado nonprofit corporation with a mission to provide leadership in arts, athletics, and education and address community needs to enhance our Valley as a place to live, work, and visit.